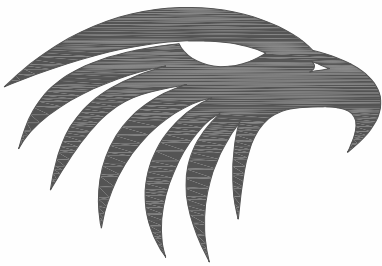


# FALCON

SAILPLANE

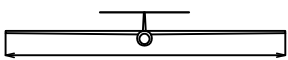


Order N°: 020144

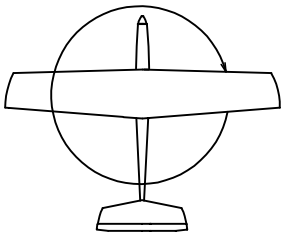
Radio system you'll need :



875 mm



1500 mm



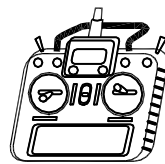
19,9 dm<sup>2</sup>  
47,7-55,3 g/dm<sup>2</sup>



0,95 - 1,1 kg



MH 32 mod.



- ailerons - 2 servos
- elevator
- rudder

Manufactured by:

**TOPMODEL CZ**

679 05 HABRŮVKA 100 - CZECH REPUBLIC

[www.topmodelcz.com](http://www.topmodelcz.com)

e-mail: [info@topmodelcz.cz](mailto:info@topmodelcz.cz)

## Doporučené výchytky:

Křídélka: nahoru 8 - 11mm, expo 20%  
dolů 6 - 8mm, expo 20%  
Výškovka: nahoru 6 - 9mm, expo 25%  
dolů 6 - 9mm, expo 25%  
Směrovka: 20mm, expo 25%

Položka #	Název dílu	Materiál/rozměr	volně/ks	Balíček/ks
	montážní návod		01	
1	trup	laminát	01	
1-2	držák serv	překližka 4x35x50mm		01
1-3	držák bovdenu	balsa 4x7x50mm		01
1-4	vlečný háček	ocel Ø2mm, podložka, matice		01+02+02
1-5	držák vlečného háčku	překližka 4x12x40mm		01
2	křídlo	polystyren/dýha	02	
2-2	šroub křídla	M4x15mm		02
2-21	aretační kolík	sklotextit Ø3x50mm		02
2-25	aretační kolík	sklotextit Ø2x20mm		01
2-3	matice	Al M4		02
2-31	podložka matice	překližka 3x20x46mm		01
2-4	držák serva	překližka 5x35x35mm		02
2-41	krytka serva	PSH 0,5mm		02
2-5	táhlo křídélek	M2x25mm		02
2-6	vidlička	plast l-17mm/čep 1mm		02
2-6F	vidlička kovová	kov M2, matice M2		02+02
2-8	páka křídélka	sklotextit 1mm		02
24	spojka křídla	ocel Ø4x240mm		01
3	výškovka	balsa	01	
3-2	šroub VOP	plast M3x15mm		02
3-3	matice VOP	Al M3		02
3-5	táhlo výškovky	plastØ2mm ocel Ø0,8mm	01+01	
3-6	koncovka táhla	mosaz Ø1mm		01
3-8	páka výškovky	sklotextit 1mm		01
4	směrovka	balsa	01	
4-3	steven	balsa 6mm		01
4-5	táhlo směrovky	plast Ø2mm ocel Ø0,8mm	01+01	
4-6	koncovka táhla	mosaz Ø1mm		01
4-8	páka směrovky	sklotextit 1mm		01
6	kabina	laminát	01	
6-1	uchcení kabiny	ocel Ø1,2x125mm		01
6-2	skelná tkanina	20x45mm		01
7	obtisky		01	
11	závěs kormidla	plast 11x28mm		02

### doporučené příslušenství

		kusů		obj.číslo <a href="http://www.topmodelcz.com">www.topmodelcz.com</a>
vysílač				
přijímač	5 channel			
servo	Blue Bird BMS-115HV+	2	křídélka	3427
servo	KST DS113MG V6.0	2	směrovka & výškovka	2535

## Recommended rudder angles:

Ailerons: up 8 - 11mm, expo 20%  
down 6 - 8mm, expo 20%  
Elevator: Up 6 - 9mm, expo 25%  
down 6 - 9mm, expo 25%  
Rudder: 20mm, expo 25%

Part #	Part name	Material/dimensions	Loose	In bag
	building instruction		01	
1	fuselage	fiberglass	01	
1-2	servo tray	plywood 4x35x50mm		01
1-3	link support	balsa 4x7x50mm		01
1-4	tow hook	steel Ø2mm, washer, nut		01+02+02
1-5	tow hook support	plywood 4x12x40mm		01
2	wing	styro/abachi	02	
2-2	wing fixing screw	plastic M4x15mm		02
2-21	centering pin	fiberglass Ø3x50mm		02
2-25	centering pin	fiberglass Ø2x20mm		01
2-3	nut	Al M4		02
2-31	nut mount	plywood 3x20x46mm		01
2-4	servo mount	plywood 5x35x35mm		04
2-41	wing servo cover	PSH 0,5mm		02
2-5	aileron pushrod	steel M2x45mm		02
2-6	clevis	plastic l-17mm/pin 1mm		04
2-6F	metal clevis	metal M2, nut M2		02+02
2-8	aileron horn	fiberglass plate 1mm		02
24	wing joiner	steel Ø4x240mm		01
3	horizontal stabilizer	balsa	01	
3-2	elevator fixing screw	plastic M3x15mm		02
3-3	elevator nut	Al M3		02
3-5	elevator link	plastic Ø2mm steel Ø0,8mm	01+01	
3-6	threaded link	brass for Ø1mm		01
3-8	elevator horn	fiberglass plate 1mm		01
4	fin	balsa assembly	01	
4-3	closing strip	balsa 6mm		01
4-5	rudder link	plastic Ø2mm steel Ø0,8mm	01+01	
4-6	threaded link	brass for Ø1mm		01
4-8	rudder horn	fiberglass plate 1mm		01
6	canopy	fiberglass	01	
6-1	canopy fixing	steel Ø1,2x125mm		01
6-2	fiberglass textile	20x45mm		01
7	stickers		01	
11	pinned hinge	plastic 11x28mm		02

## Recommended equipment

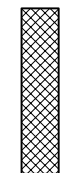
		Pieces		Item No. <a href="http://www.topmodelcz.com">www.topmodelcz.com</a>
transmitter				
receiver	5 channel			
servo	Blue Bird BMS-115HV+	2	ailerons	3427
servo	KST DS113MG V6.0	2	elevator & rudder	2535

(4-5)

(3-5)

(6-1)

(6-2)



(3-2)

(3-3)

(3-2)

(3-8)

(4-8)

3-3

3-2

3-8

3-5

(4-3)

(1)



6  
6-1

43-45

2-2

2-31

2-3

(1)

3-6

1-2

1-3

1-4

1-5

RX

1-2

1-3

1-4

1-5

1-4

1-5

1-4

1-5

1-4

1-5

1-4

1-5

1-4

1-5

1-4

1-5

1-4

1-5

1-4

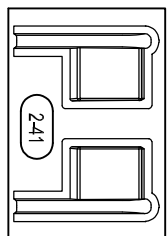
1-5

4-6

4-5

4-8

4-3



(2-4)

(1-2)

(1-3)

(1-4)

(1-5)

(2-3)

(2-2)

(2-3)

(3-6)

(4-6)

(2-2)

(2-3)

(2-4)

(2-5)

(2-6)

(2-6)

(2-8)

(2-4)

(2-5)

(2-6)

(2-6)

(2-8)

(2-8)

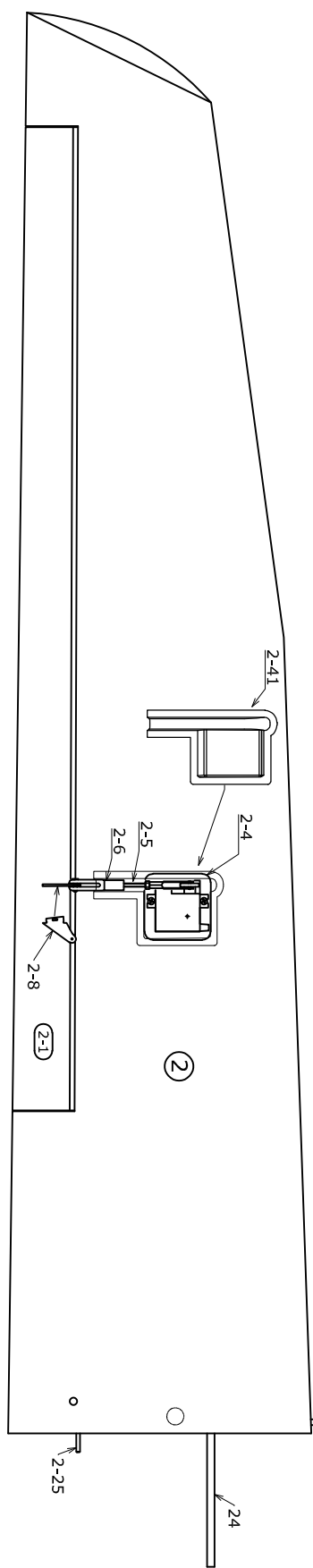
(2-8)

(2-8)

(2-8)

(2-8)

(2-8)



2-41

2-4

2-4

2-5

2-6

2-8

(2-1)

(2)

2-21

2-25

2-21

2-25

2-21

2-25

2-21

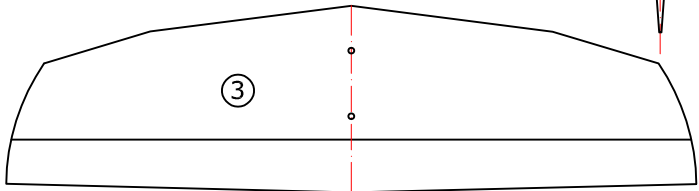
2-25

2-21

2-25

2-21

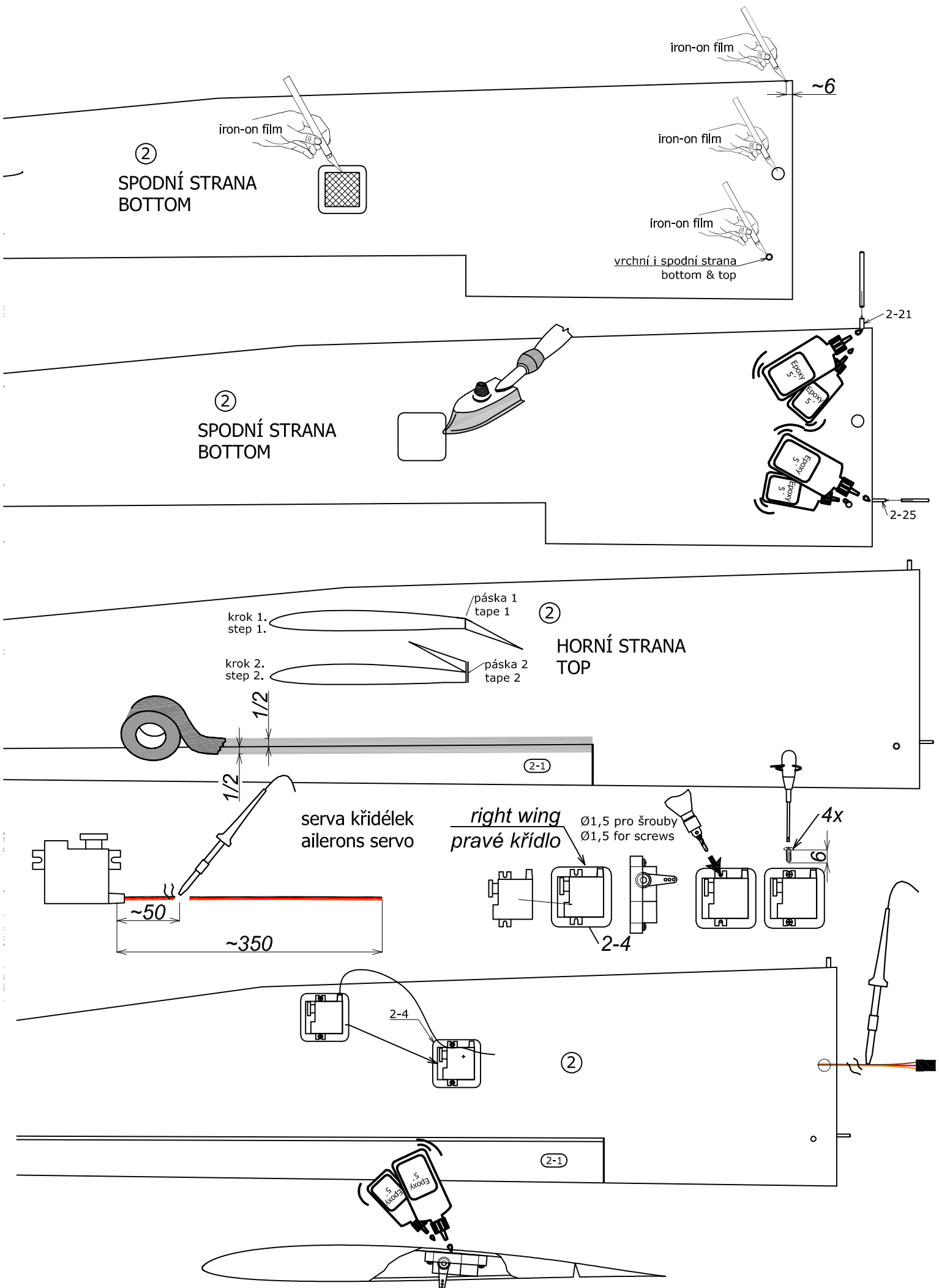
2-25

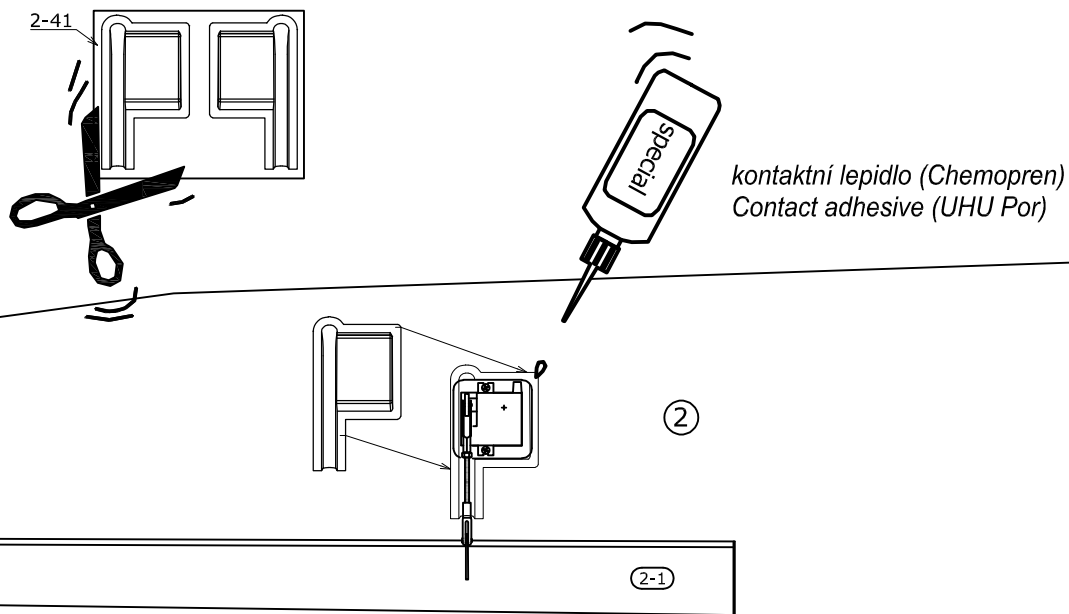
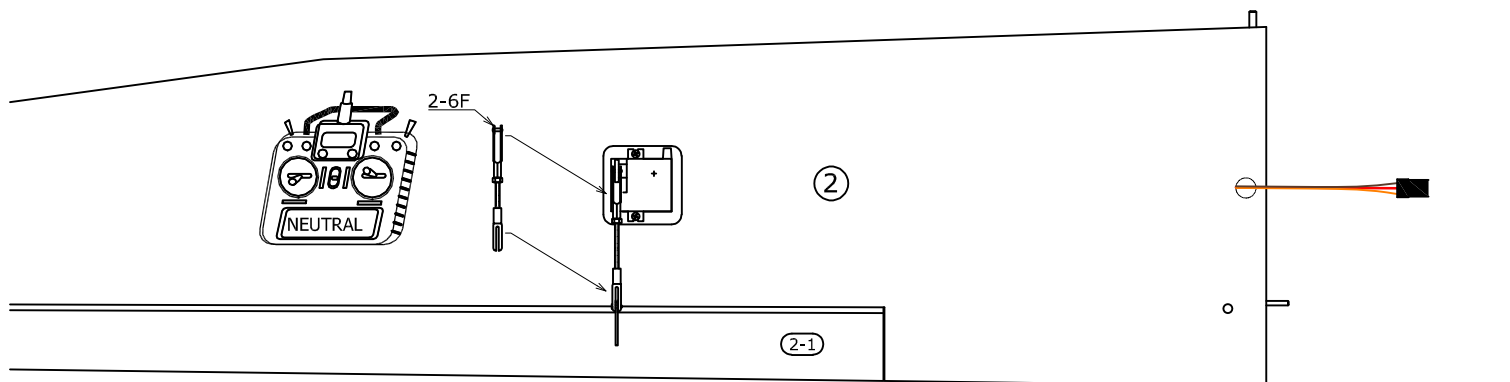
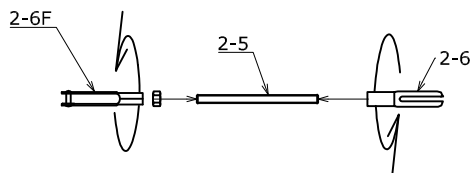
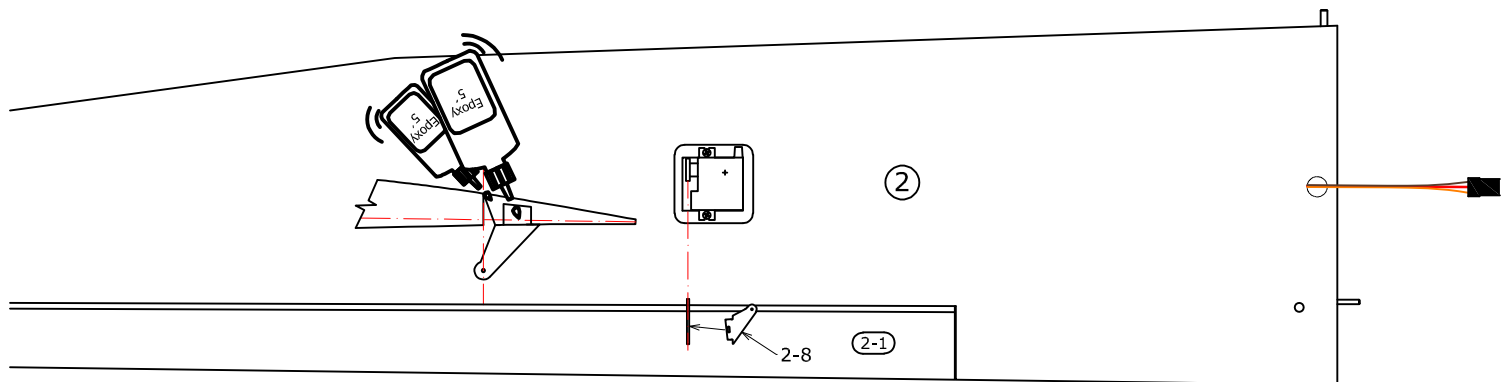
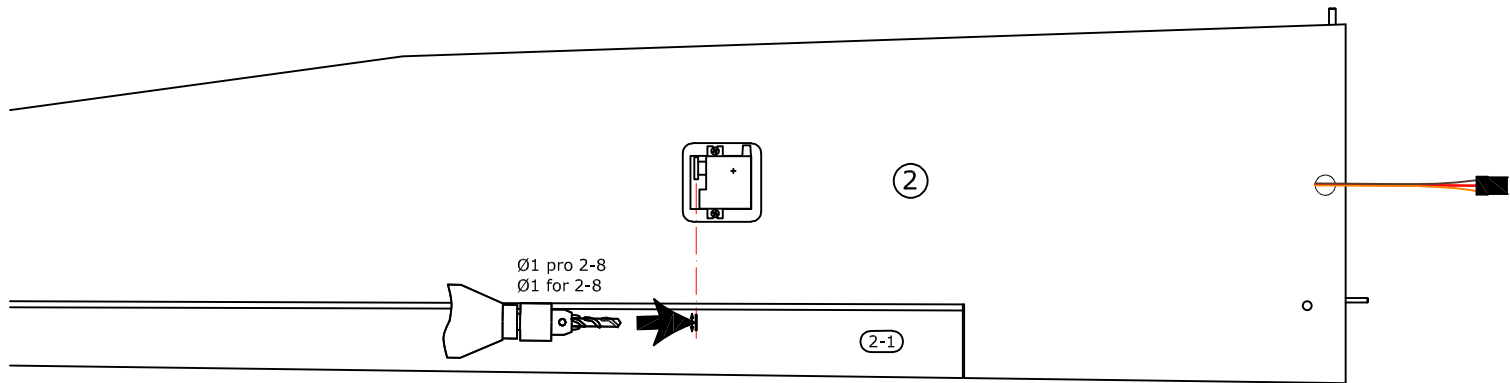


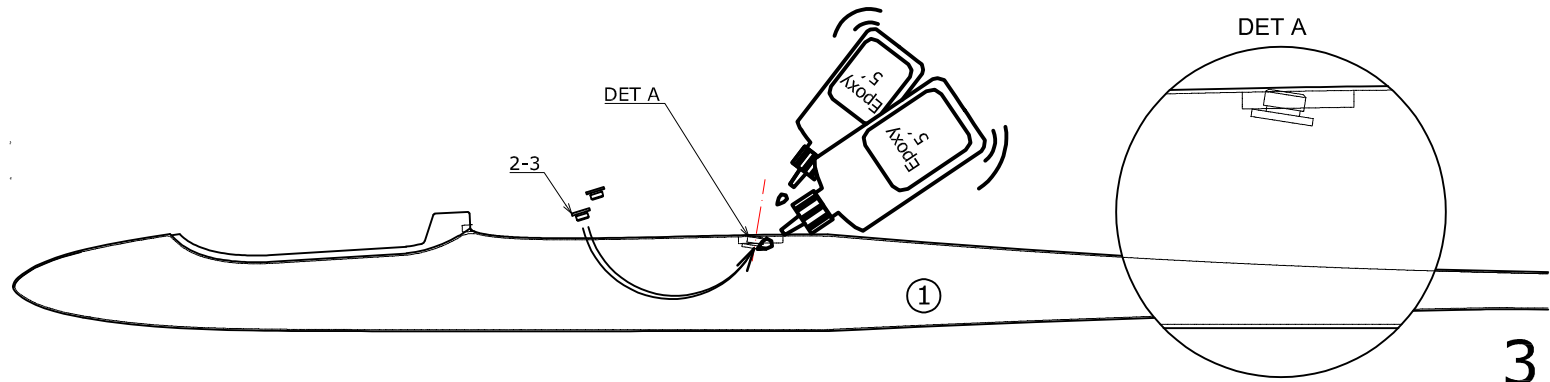
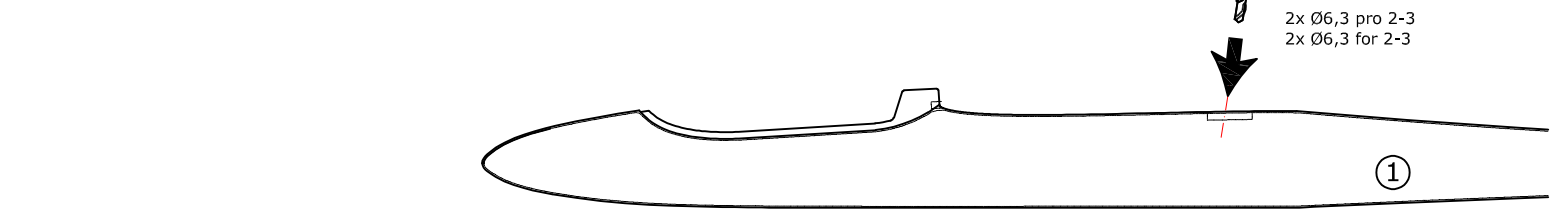
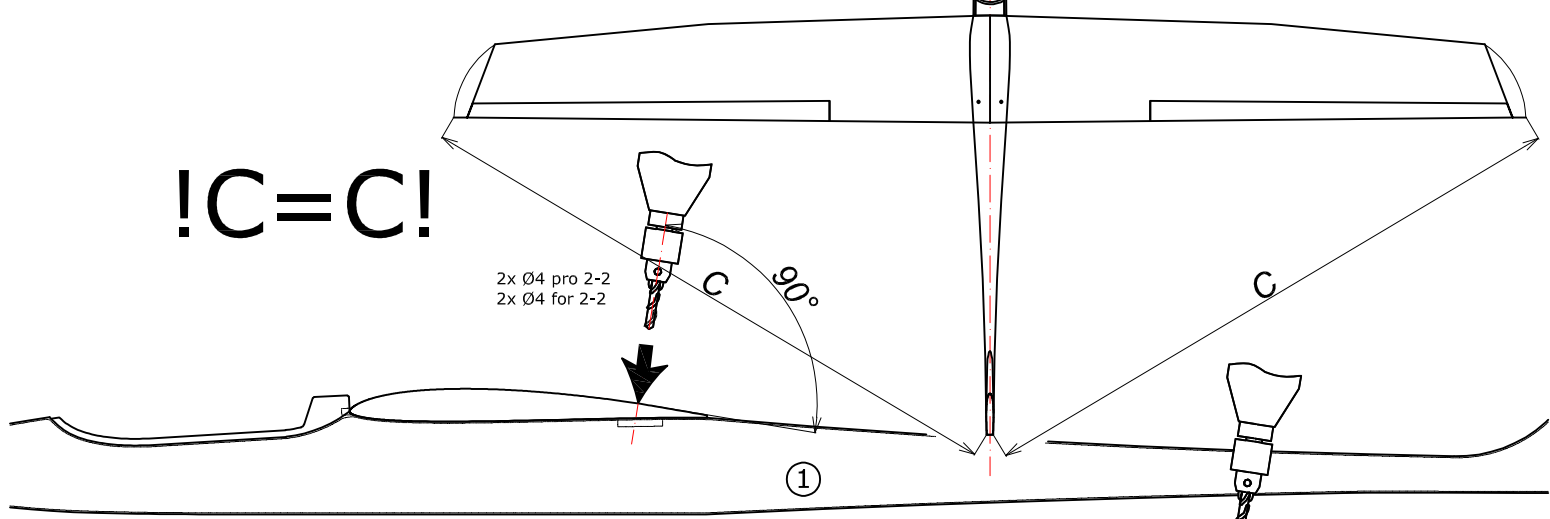
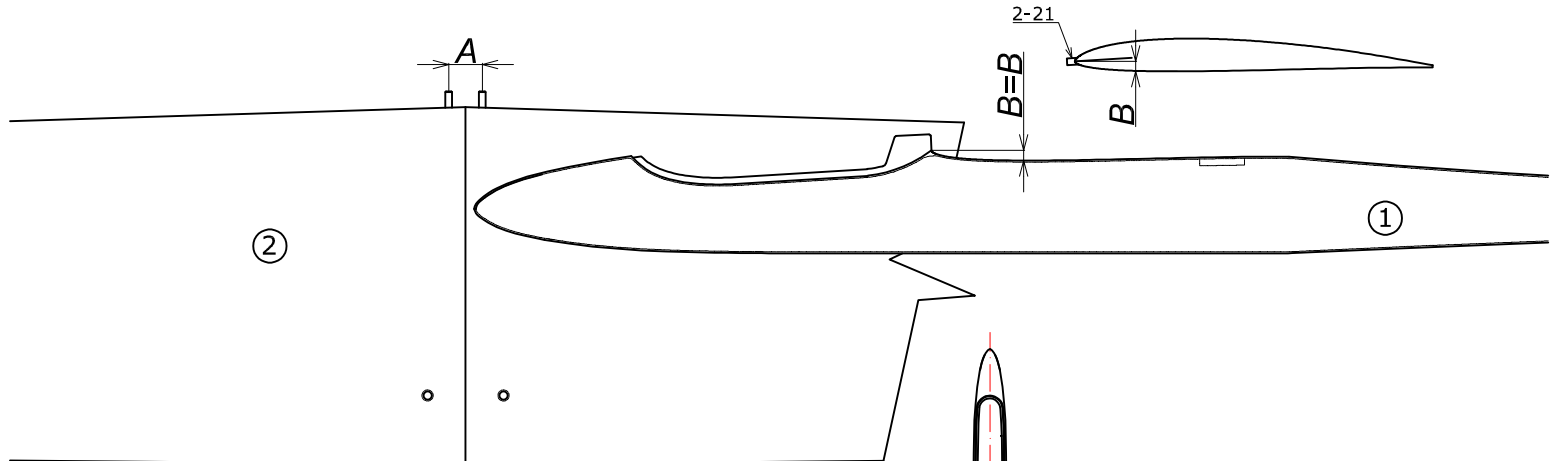
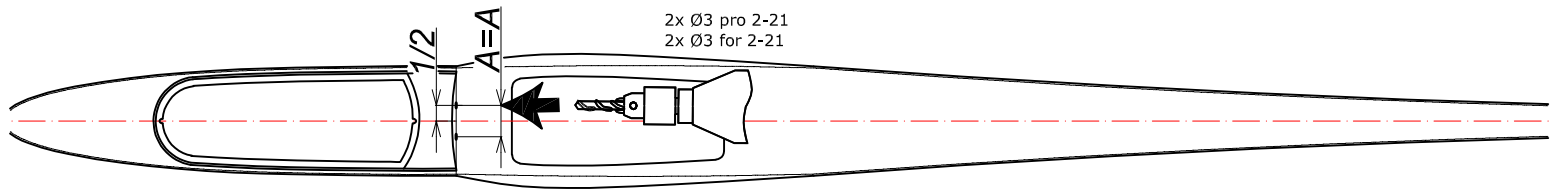
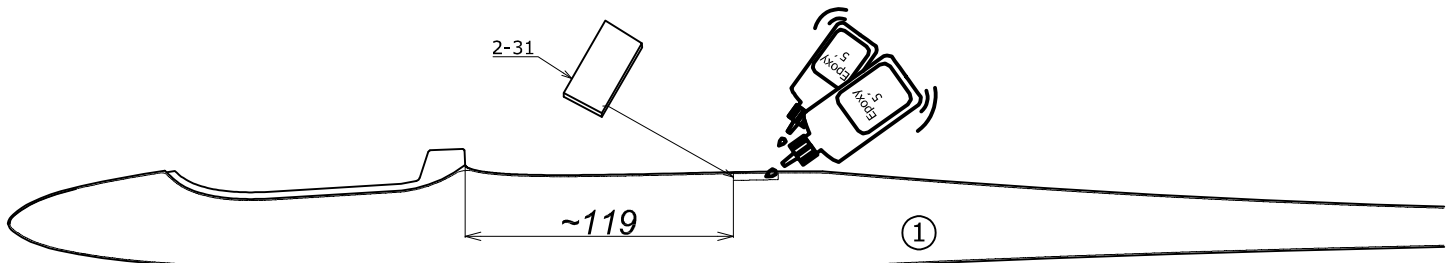
(7)

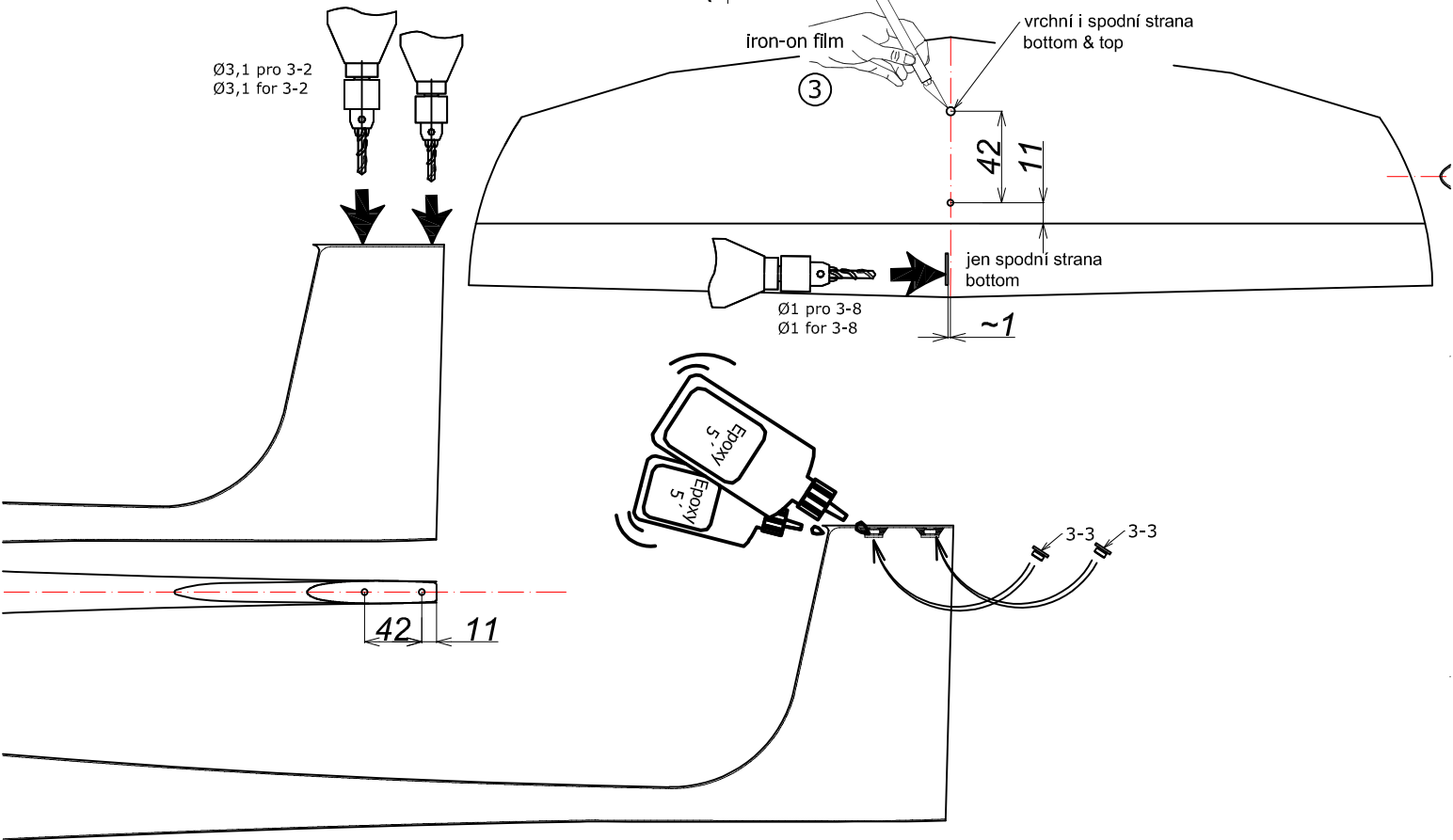
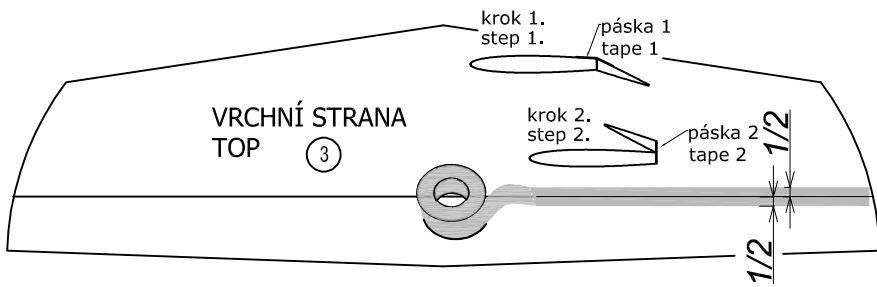
# FALCON

© TOPMODEL CZ Manufactured by TOPMODEL CZ s.r.o. 679 05 HABRŮVKA 100 - made in Czech Republic - www.topmodelcz.com - e-mail: info@topmodelcz.cz









### Elevator & rudder servo

